

Audacity[®]

The Fearless Waterproof Hybrid Rigid Core





A.R.F

(Advance Rigid core Flooring)

Audacity Waterproof Hybrid Rigid Core Flooring is a rigid high density hybrid core, which is ultra stable, 100% waterproof and has incredible wood and Concrete looks!



A.R.F

(Advance Rigid core Flooring)

Structure

STAMPEDE™ Ultra Protection

Commercial-grade resistance to heavy foot traffic, scratches and stains

Decorative layer

For a natural and authentic wood look & feel

Solid Limestone-based core

100% waterproof

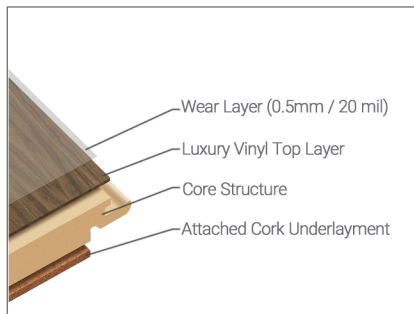
Rigid and stable

2X more stable vs LVT

10X more indent resistant vs WPC

Pre-attached Cork Backing

For additional comfort and sound absorption





Seamless transition over large areas
6400 sq.ft up to 4300sq. ft./ 400sqm



Outstanding dimensional stability and
resistance to heat and direct sunlight



Wet and steam moppable for a worry
free maintenance



Suitable for every room, including
bathrooms, 3 season rooms, kitchens,
basements



Extra dent and impact resistant



Next step in flooring design



Unique Features

- ▶ 100% waterproof
- ▶ Outstanding dimensional stability and resistance to heat and sunlight.
- ▶ Seamless installation over large areas -400m2 and no transition in doorways
- ▶ Dimensional stability up to 80°C
- ▶ Extra impact resistant and dent proof
- ▶ Easy-to-install over most hard surface subfloors
- ▶ No acclimation needed
- ▶ Wet and steam moppable for a worry-free maintenance

Audacity® A.R.F. (Advance Rigid core Flooring)
The Fearless Waterproof Hybrid Rigid Core



ELITE TILE Blend

Size: 5 x 300 x 600 mm
(incl. 1mm Cork)

Surface: Stone Embossed

Edges: Painted Bevel

Wear Layer: 0.5 mm



Audacity®
The Fearless Waterproof Hybrid Rigid Core
A.R.F. (Advance Rigid core Flooring)



ELITE TILE Stride

Size: 5 x 300 x 600 mm
(incl. 1mm Cork)

Surface: Stone Embossed

Edges: Painted Bevel

Wear Layer: 0.5 mm



Audacity[®] A.R.F. (Advance Rigid core Flooring)
The Fearless Waterproof Hybrid Rigid Core



Valey Oak

Size: 5 x 225 x 1532 mm
(incl. 1mm Cork)

Surface: EIR

Edges: Regular Bevel

Wear Layer: 0.5 mm





Rustic Barn

Size: 5 x 225 x 1532 mm
 (incl. 1mm Cork)

Surface: EIR

Edges: Regular Bevel

Wear Layer: 0.5 mm





Royal Oak

Size: 5 x 225 x 1532 mm
(incl. 1mm Cork)

Surface: EIR

Edges: Regular Bevel

Wear Layer: 0.5 mm





Nordic Oak

Size: 5 x 225 x 1532 mm
 (incl. 1mm Cork)

Surface: EIR

Edges: Regular Bevel

Wear Layer: 0.5 mm





Native Timber

Size: 5 x 225 x 1532 mm
(incl. 1mm Cork)

Surface: EIR

Edges: Regular Bevel

Wear Layer: 0.5 mm





Native Timber



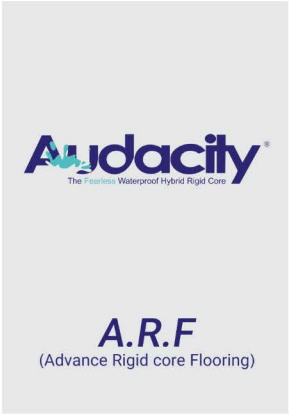
Royal Oak



Rustic Barn



Nordic Oak



Valey Oak



ELITE TILE Blend



ELITE TILE Stride

Commercial



ELITE TILE Stride

central point 259



popular Attraction 989

Nordic Oak



Nordic Oak

Rustik Barn



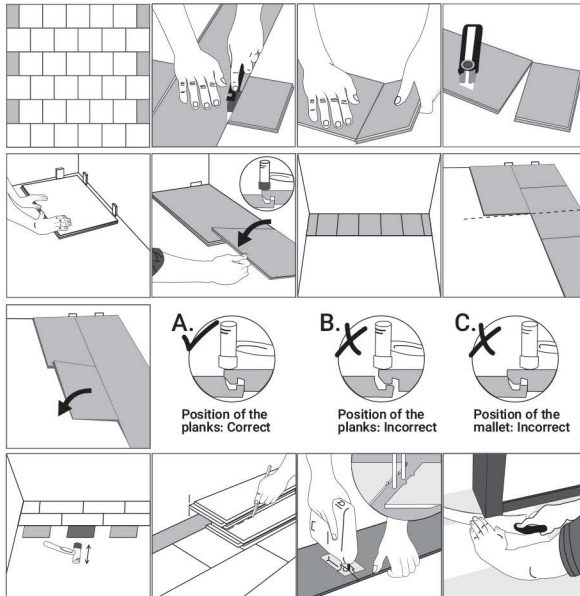
Royal Oak



Elite tile Stride

popular Atraction 569

MONOLITHIC / LINEAR PATTERN




DO NOT INSTALL OVER

- Any type of carpet.
- Existing cushion-backed vinyl flooring.
- Floating floor of any type, loose lay, and perimeter fastened sheet vinyl.
- Hardwood flooring / wood subfloors that lay directly on concrete or over dimensional lumber or plywood used over concrete.



Comparison

			Luxury vinyl	WPC	Laminate
1	100 % water proof	✓	✓	✓	✗
2	Stable to high temperature variations	✓	✗	✗	✓
3	Stable to direct sunlight	✓	✗	✗	✓
4	Large area installation (up to 400m2) without transitions in doorways	✓	✗	✓	✗
5	Extra resistant to impacts & heavy static loads	✓	✗	✗	✓
6	No acclimation required	✓	✗	✓	✗
7	No telegraphing of small subfloor imperfections	✓	✗	✓	✓
8	Suitable for every room	✓	✗	✗	✗
9	Minimum subfloor preparations	✓	✗	✓	✓
10	Easy and fast to install	✓	✗	✓	✗
11	Sound absorbent	✓	✗	✓	✗
12	Floorscore Certified	✓	✗	✗	✗
TOTAL SCORE:		12/12	1/12	7/12	5/12



Comparison

	Requirement	LVT	WPC	Audacity®	Result
Density	-	1900 kg/m³	1100 kg/m³	1950 kg/m³	Up to 2X more dense vs WPC
Indentation ATSM F1914 the depth of the indentation compared to the thickness	<10%	7.50%	16.5% FAILED	1.5% PASS	Up to 10X more indentation resistant vs WPC Up to 5X vs LVT
Static load ASTM F970 the depth of the indentation	-	0.023 mm	0.022 mm	0.0075 mm	Up to 3X more resistant to heavy static loads vs both WPC and LVT
Residual indentation (Section 3.1) Max force (in psi*) applied when the indent reaches a depth of 0.05mm	Residential, Light Commercial > 870 psi Commercial > 1160 psi	800 psi	500 psi	2000 psi	Up to 4X more resistant vs WPC Up to 2.5X vs LVT

دفتر مرکزی

تهران، خیابان دکتر شریعتی، نبش خیابان شهید کلاهدوز، برج نگین قلعه، طبقه اول، واحد ۱۱ | ۰۲۱ ۲۲ ۶۱ ۰۰۰۱

